

BRO-WP

Brono - Wallpack Series

The Brono Wall Pack is the ideal solution for commercial and residential applications. This classic fixture is a great option to uniformly illuminate warehouse, factory and stadiums. Main structural component for the lamp body is ADC12 die-cast aluminum, with advantages of shock resistance and corrosion resistance. This wallpack is also made with high temperature resistant silicone seals to eliminate atomization.



Applications:

- Exterior building
- Tunnel
- Walkway
- Wall
- Entryway

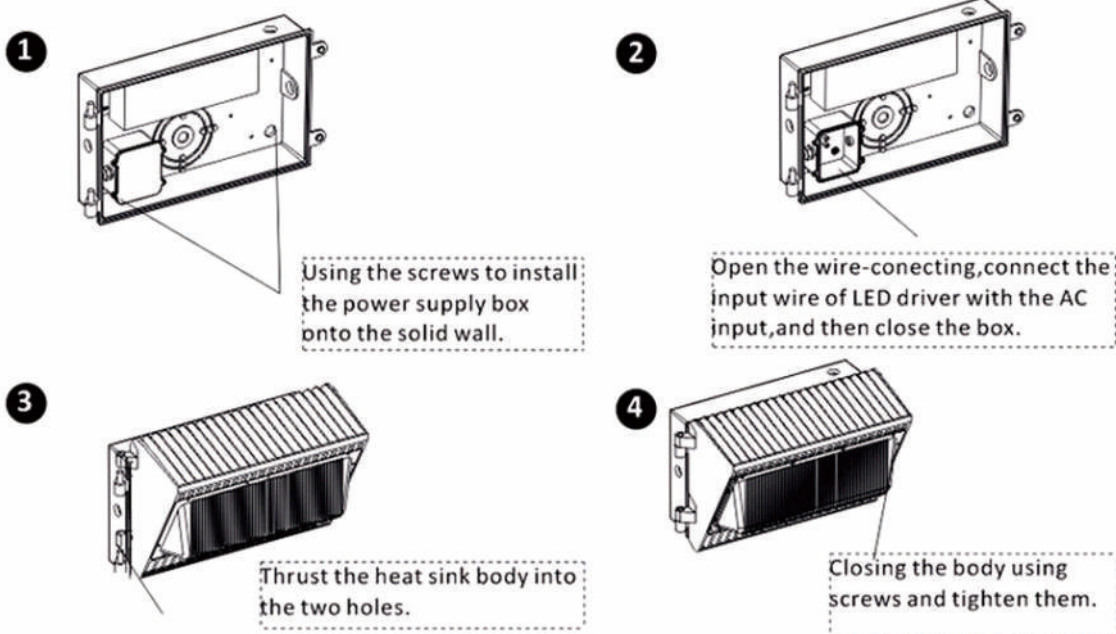
BRONO Series



Ordering information

Model	Power	Size	Lumen	Beam Angle	CCT	Voltage	Power Factor	CRI	Net Weight
BRO-WP-0040	40W	360x232x192mm	4,800lm	120°	2700/3000/4000/5000/>6000K	AC100-277V	>0.95	≥83	3.28kg
BRO-WP-0060	60W	360x232x192mm	7,200lm	120°	2700/3000/4000/5000/>6000K	AC100-277V	>0.95	≥83	3.28kg
BRO-WP-0100	100W	360x232x192mm	12,000lm	120°	2700/3000/4000/5000/>6000K	AC100-277V	>0.95	≥83	4.12kg
BRO-WP-0120	120W	360x232x192mm	14,400lm	120°	2700/3000/4000/5000/>6000K	AC100-277V	>0.95	≥83	4.12kg

Installation



Product Packing Specification

Packing Details					
Box Size	395x325x260mm				
Pack Quantity	1pcs/ctn				
Gross Weight	7.0kg/ctn				
CTN Size	395x325x260mm				